

 PROUDLY  
HANDMADE IN  
GREAT BRITAIN

## HELMET & BODY PROTECTOR FITTING GUIDE



**CHAMPION**  
YOUR SAFETY IS OUR PASSION





## BUILT TO PERFECTION

Champion riding hats out perform British safety standards tests day after day. Why daily? Because Champion believes that hats should not only be safety tested at the design stage, but continually tested throughout manufacture. This investment in safety means that every Champion hat achieves the highly credited British Standard Kitemark and this is a guarantee that every hat will comfortably out perform the four main areas of testing; penetration, shock absorption, harness strength and stability.

Each Champion riding hat conforms to the following specification;

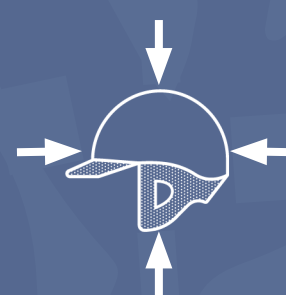
- Lightweight high performance shell
- Shock absorbing polystyrene liner for improved safety
- Easily adjustable harness with quick release buckle
- Bottom edge protection



Penetration  
Tested



Harness  
Tested



Impact  
Tested



Crush  
Tested



NEW  
**INSIGHT**  
PEAKED HELMET

NEW GENERATION BRANDING

SCOOP VENTILATION SYSTEM

OVAL AND ROUND FIT

EN1384, PAS

WASHABLE CROWN PAD LINER

STANDARD AND WIDE PEAK



**CHAMPION**

 PROUDLY  
HANDMADE IN  
GREAT BRITAIN



# CHAMPION HELMET STRUCTURE

REVOLVE X-AIR MIPS JOCKEY HELMET |  
PAS.015:2011/VG1 01.040 2014-12/F1163-15

ROUGH SANDED FINISH  
Helps retain satin cap cover.



FULLY ADJUSTABLE HARNESS  
Ensures helmet remains in place  
in accident situations.

OUTER SHELL IN ABS  
Prevents penetration by sharp  
objects & distributes impact  
energy evenly to polystyrene  
liner.



EXPANDED POLYSTYRENE LINER  
Absorbs and reduces impact.

FOAM COMFORT PADDING  
Ensures snug fit & prevents  
excessive movement in use.

Mips

THE MIPS LOW FRICTION LAYER  
Intended to help reduce the rotational motion to  
the head in certain angled impacts.  
(not all helmets include Mips technology)

# AND HOW THEY WORK

All champion hats and skulls are made from the following:

## AN OUTER SHELL

(which is made from ABS Plastic in the traditional hats & skulls, and Glass Fibre in the Vent-Air)  
serves 2 purposes:

- To stop any sharp objects penetrating the hat/skull.
- To spread the energy from an impact over a larger surface.

## A POLYSTYRENE LINER

absorbs the energy from the impact, causing the beads to crush  
together and helps reduce bruising to the brain. In simple terms the liner becomes crushed as  
opposed to the rider's head.

## FOAM PADDING

provides comfort for the wearer.

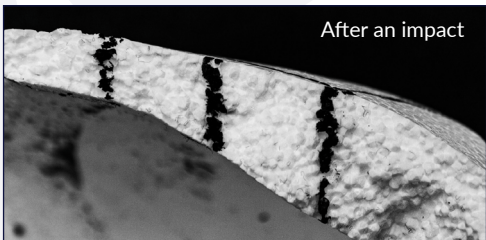
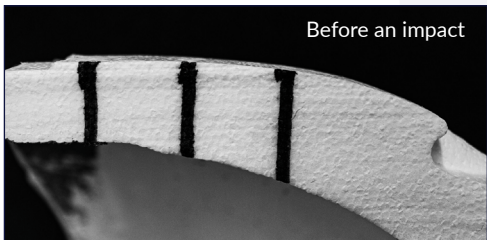
## AN INTERNAL FABRIC LINING

makes the hat look neat and tidy on the inside.

## A REMOVABLE LINER

provides extra comfort to the wearer and is removable so it can be washed and replaced when  
necessary.

The photographs below show a cross section of a X-Air polystyrene before an impact (on the left) and a cross-section of an X-Air polystyrene after impact (on the right). These photographs clearly show how the polystyrene has crushed at the impact areas, helping to save the rider from serious head injury.





## TESTED TO DESTRUCTION

Equestrian helmets undergo rigorous testing to ensure they provide maximum protection in an accident. Impact testing assesses how well a helmet absorbs shock by dropping it onto specific anvils, varying by safety standard. Lateral deformation checks the helmet's ability to withstand sideways pressure, simulating a horse falling on the rider. Retention strength tests the durability of the chin strap under force, while retention stability ensures the helmet stays securely in place through static load or a pull-off test mimicking sudden, violent forces.

To guarantee reliability in different conditions, helmets undergo conditioning by being exposed to extreme temperatures (-20°C to +50°C) and water to test their performance in varying climates. Lastly, the penetration test evaluates the helmet's ability to stop sharp objects from breaching its surface, with spikes dropped from different heights. These rigorous tests ensure helmets meet strict safety standards, giving riders confidence in their protection when it matters most.



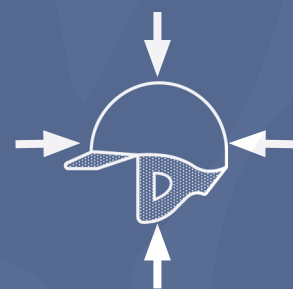
### THE PENETRATION TEST

As an example; a 3kg toughened steel pointed spike is dropped directly onto the hat - a test which serves to prove there is no way in for sharp pointed objects such as studded horse shoes.



### THE HARNESS TEST

Involves two forms of tests, straps are tested to ensure that hats will be stable and keep in place even under the most extreme riding activity.



### THE IMPACT TEST

A weighted hat is dropped vertically onto a steel anvil - a test which serves to prove the shock absorption qualities required in a potential fall.



### THE CRUSH TEST

The helmet is positioned between two steel plates and squashed to a high force to ensure the helmet can withstand the forces associated with the worst of falls..

## BSI KITEMARK

All Champion hats and skulls carry the BSI Kitemark logo.

This kitemark shows that a quantity from every batch is independently tested by the British Standards Institution to ensure consistent adherence to the current safety standards.

All Champion helmets meet a variation of the following standards:

- **EN1384:2023**
- **PAS 015 2011**
- **VG1 01.040 2014-12**
- **ASTM F1163-15**



# CHAMPION

 PROUDLY  
HANDMADE IN  
GREAT BRITAIN



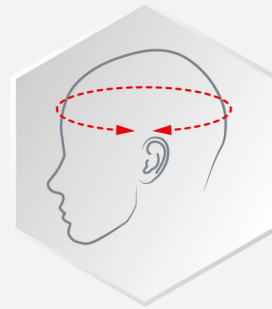
## STEP BY STEP GUIDE TO FITTING

1

The customer's hair should be worn low in the nape of the neck; for customers with textured hair, ask the customer to push back and tie hair as tightly but comfortably as possible.

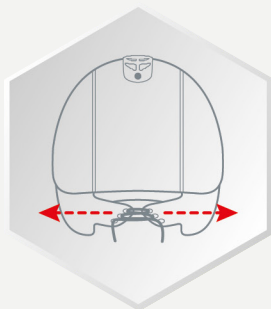
2

Measure the customer's head with a tape measure in cms. Place the tape measure  $\frac{1}{2}$  an inch/13mm above the eyebrows, skim the tops of the ears and take the fullest part of the head. Smooth your hand over thick hair to find the fullest part of the head.



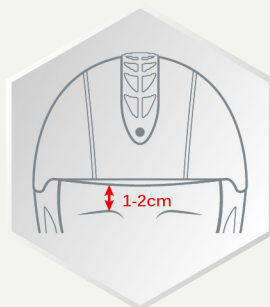
3

Explain to the customer that the helmet you are fitting may feel more snug than the one they're used to riding in. With wear and tear the foam in their old helmet will have worn slightly and therefore will feel looser than a brand new one. Also explain that hats have different shapes, where a customer may measure 56cm, in different shapes they might fit a 55cm or 57cm depending on the shape of their head, always go with the best fit, not the correct size; helmet sizing is not consistent across brands which is why you should always be professionally fitted.



4

Prepare the harness for fitting by listening to the laces or nape strap and hold the harness out of the way. Take the helmet and roll it onto the customer's head from the front, placing the helmet upon the rider's head to cover as much of the forehead as possible without obstructing the rider's vision. Press down until it is in the correct position on the head.

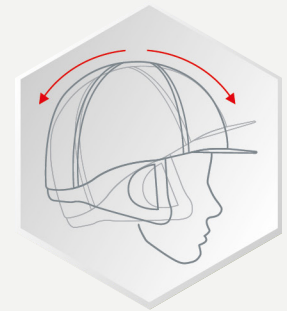


5

Ensure your customer can feel the top of the helmet on the top of their head. If not, the helmet may be too small, therefore repeat the previous steps with the next size up.

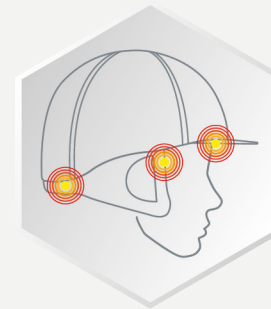
6

Hold the helmet lightly at each side and gently rock the helmet. You need to ensure there is a vacuum on the front fitting, therefore the customer's eyebrows should move up and down when the helmet is rocked back and forth. Another way to test for this vacuum/suction is to gently lift the helmet off the customer's head. It should create a feeling of suction as you lift it. If there is no vacuum/suction and the eyebrows do not move, then the helmet is too big. Repeat the steps above with a smaller helmet.



7

Check for space at the front of the temples. A little room at this point prevents headache from occurring. Ask the customer to clench their teeth. If there is any pain in the temples then try a larger size.



8

Check the space at the back of the helmet. There may be a little space here which is not as critical as the front area. However, too much room would suggest that you are fitting either the wrong size or the wrong style for that customer's head.

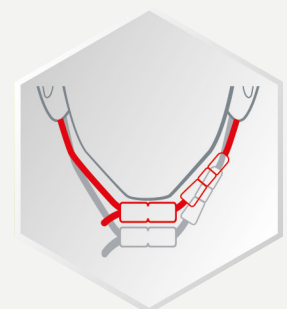
9

Adjust the harness, begin with the front strap clip in the buckle, leave the strap loose, adjust the nape strap then adjust the front strap ensuring you can snugly fit one finger between the strap and the rider's chin. Thread the loose ends of both straps through the retaining "O" rings and slide them up to the buckles to prevent slippage, the buckle should rest flat on the side of the face or under the chin.

10

The helmet should remain stable on the rider's head when moved in the following ways;

- Nodding the head up and down
- Rocking the head from side to side
- Twisting the head left to right



11

Check again for your own peace of mind that you have the vacuum fit across the front area by gently rocking the helmet. Gently tapping the hat from the back is another way to ensure there is no movement. The hat should not tip forward onto the rider's eyes whilst being tapped.



## USEFUL TIPS

- Always talk through the process with your customer. This ensures that they know what to expect next and also gives them the comfort that you know what you are doing and a little understanding as to why you're doing it.
- Give the customer, especially children, time to get used to the feel of the helmet and be prepared to spend extra time with them.
- Should the helmet force the ears to bend substantially then try another style. All moulds are different shapes therefore a different style may be more suitable for that customer's head.
- If you are struggling to fit your customer into any style of Champion helmet then you may need to try another brand. All brands, mould shapes are different as are peoples head shapes.
- Always advise your customer on the importance of taking care of their new helmet. Dropping the helmet, or allowing it to roll around in the car etc. can cause damage. This damage would not be visible on the outside, however internally the polystyrene will have crushed slightly and therefore would not be protecting the wearer as completely as it should. Champion recommend helmets should be replaced after 2-3 years depending on the degree of usage.
- If possible show the customer a mirror for them to see if they like the look of their new helmet.
- A chair in the fitting area can be useful for taller customers to sit on whilst you measure their head and fit their helmet. It is also useful when fitting children.
- It is advisable to remove the helmet from the customer's head when adjusting the straps - especially when fitting children. Some nervous customers may prefer to do up the clip themselves.
- Should your customer feel that the helmet that you have fitted is too small then try the next size up on them. This may feel more comfortable if they are not used to wearing a helmet, however you will be able to show them how the helmet moves as opposed to their eyebrows and explain that the front vacuum is the vital fitting point. Give them extra time to wear the correct size to get used to the snug feeling, or try a different style to see if it is more comfortable.
- Mips helmets will still wobble on the head even when fitted securely due to the Mips system, however this should be no more than 15mm in any direction and should not impede rider vision.







NEW  
**LIBER8**  
BODY PROTECTOR



NEW GENERATION PROTECTION

FEMALE-CENTRIC DESIGN

SILICONE TABS FOR COMFORT

LAYERED FOAM CONSTRUCTION

EN13158:2018

32 SIZES AVAILABLE



## STEP BY STEP GUIDE TO FITTING

### TI22 & LIBER8 FITTING GUIDE

1. The protector should be fitted over a rugby shirt, T-shirt or similar.
2. Measure the chest circumference, waist circumference and over the shoulder waist to waist and refer to the size chart. (See back of this booklet)
3. Unzip the body protector, open the laces, place on the customer and zip up.
4. Tighten the laces from top to bottom; larger chested individuals may feel more comfortable if the body protector is laced from the bottom to top to allow more room across the chest. Ensure that both sides are pulled in the same amount and tuck the remainder of the laces inside the lace cavity.
5. Ask the customer to locate their bottom rib either side of the zip, there should be around 3cm between this point and the bottom of the protector. If not a taller size may be required.
6. Check that the top of the body protector reaches the top of the sternum (breastbone) at the front and reaches the prominent bone at the base of the neck
7. Ensure that there is 7-10 cm clearance between the body protector and the top of the back of the saddle. A taller or shorter size may be required to meet this point.

### SCULPT FITTING GUIDE

1. The protector should be fitted over a rugby shirt, T-shirt or similar.
2. Ask the customer their dress size or men's size and measure from approximately 5cm above the top of the hip bone to the middle of the shoulder, DO NOT go outside the specified protective panel size, as this will directly impact the protection offered by the garment.
3. Place the sculpt on the customer and zip up.
4. Ensure that the Sculpt is a snug fit but not too tight to restrict movement; checking that there are little to no gaps around the neck/chest area.
5. Check that the prominent bone at the base of the neck is met by the top of the back protector.
6. Ensure that there is 7-10 cm clearance between the body protector and the top of the back of the saddle. A taller or shorter size may be required to meet this point.

## EUROPEAN SAFETY STANDARDS

The revision of the European safety standard is intended to ensure that there are no gaps to the sides or shoulders of body protectors. Here are the key elements...

- All sizes shall be tested at type approval stage. One child & one adult protector will be required for annual re-test.
- All protectors will be tested whole with particular attention paid to closures such as zips. All removable tails shall be detached before coverage measurements are taken and before impact testing occurs.
- The waist must have a minimum overlap of 2.5cm in all sizes.
- Warning markers of a defined colour are required to denote maximum user-size opening.
- Shoulder widths are governed by chest size (4% minimum).  
For example a chest size of 100cm will result in a shoulder width of 4cm minimum.
- There shall be a minimum overlap of 2.5cm at the shoulder on all sizes.
- Half the thickness of the body protector is controlled at a maximum pre-determined distance below the top of the shoulder to help protect the rider's clavicle.
- Ergonomic tests shall be carried out on three sizes of protector by real-life subjects.
- Size markings should meet maximum and minimum sizing requirements as detailed in the standard.
- New marking requirements must include size pictogram, number of standard, date of manufacture and warnings about coloured markers and an explanation as to why they are incorporated.
- The Beta Label is to be attached to the outside of the BP in such a way that the entire label is visible.

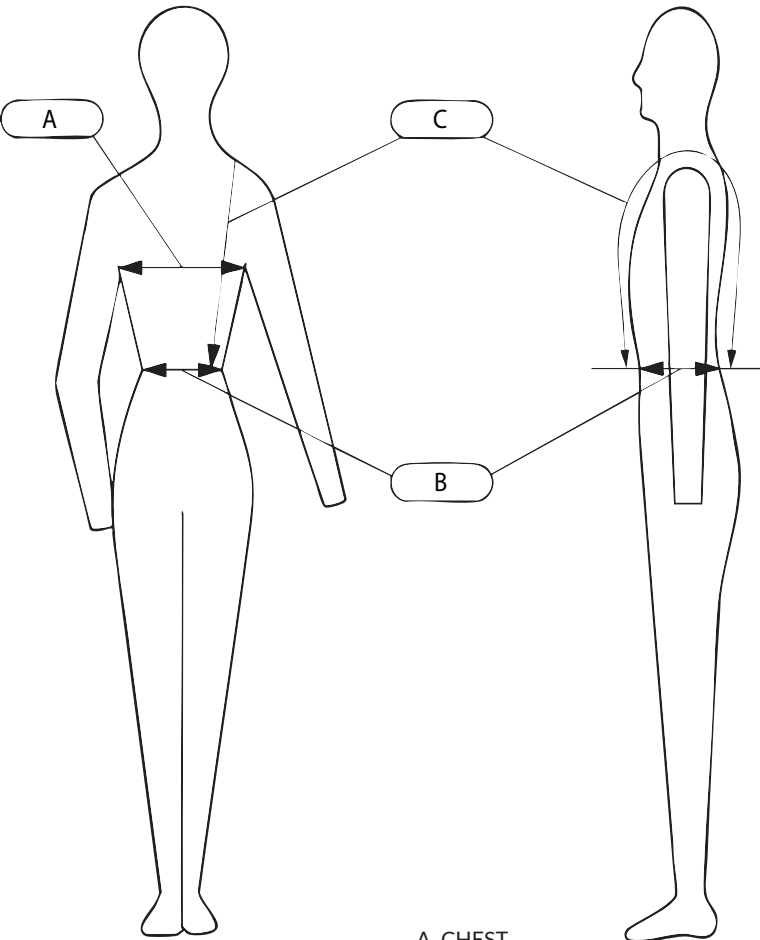
## USEFUL TIPS

- Always talk through the process with your customer. This ensures that they know what to expect next and also gives them the comfort that you know what you are doing.
- Give the customer time to get used to the feel and remember that the body protector will form to the shape of the body as it warms and may need to be re-adjusted to maintain a snug fit.
- It is not possible to fit every body shape into the Ti22. If this happens then another brand should be tried.
- Advise the customer that a full body protector is always recommended however some may prefer to wear the Sculpt as added protection when choosing not to wear a Body Protector.
- Advise the customer to keep the instructions on the ticket for further reference



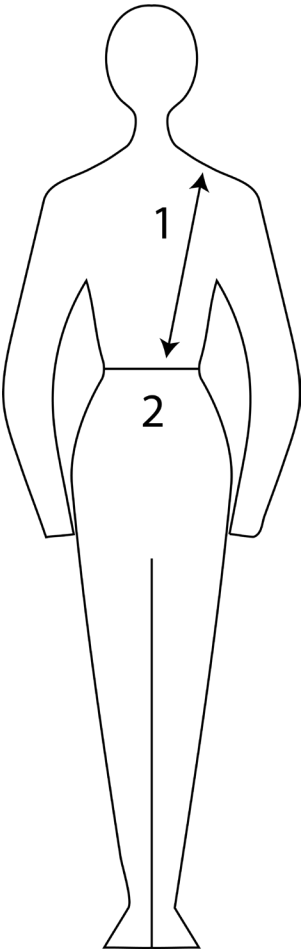
CHAMPION SIZE CHARTS IN CENTIMETRES										
LIBER8 BODY PROTECTOR										
SIZE	CHEST (A)	WAIST TO WAIST (C)	WAIST TO WAIST (C)	WAIST (B)	BACK			FRONT		
		SHORT & REG	TALL		SHORT	REGULAR	TALL	SHORT	REGULAR	TALL
CHILDRENS XXXS	48 - 53	44 - 48	46 - 50	45 - 52	27.5	29	31	15	16	17.5
CHILDRENS XXS	54 - 61	48 - 52	50 - 54	50 - 58	29	31.5	32.5	17.5	19	20.5
CHILDRENS XS	60 - 64	54 - 60	56 - 62	55 - 61	34.5	35.5	38.5	18.5	19.5	21.5
CHILDRENS S	65 - 68	59 - 66	61 - 68	61 - 66	37.5	38.5	40.5	19.5	21	23
CHILDRENS M	69 - 75	63 - 69	65- 71	66 - 72	38.5	40	42.5	21	22.5	24.5
CHILDRENS L	73 - 79	70 - 74	72 - 76	67 - 73	42	44	46.5	23	24.5	27
CHILDRENS XL	77-84	74 - 81	76 - 82	68 - 76	46	48	51.5	27	30	32.5
TEEN XS	62 - 69	74 - 80	80 - 83	50 - 55	47	50	53	30	30	33
TEENS S	66 - 74	74 - 80	80 - 83	53 - 61	47	50	53	30	30	33
TEEN M	72 - 80	74 - 80	80 - 83	63 - 68	47	50	53	30	30	33
TEEN L	73 - 82	74 - 80	80 - 83	65 - 73	47	50	53	30	30	33
TEEN XL	77 - 84	74 - 80	80 - 83	68 - 76	47	50	53	30	30	33
WOMENS XS	79 - 87	74 - 80	80 - 83	71 - 79	47	50	53	30	30	33
WOMENS S	82 - 89	74 - 80	80 - 83	75 - 83	47	50	53	30	30	33
WOMENS M	89 - 96	77 - 83	83 - 86	82 - 89	50	53	59	33	33	36
WOMENS L	95 - 104	77 - 83	83 - 86	87 - 95	50	53	59	33	33	36

TI22 & LIBER8  
DIAGRAM



A. CHEST  
B. WAIST  
C. WAIST TO WAIST

SCULPT  
DIAGRAM



1. WAIST TO SHOULDER LENGTH  
2. WAIST LINE

JOCKEY SKULL							
000	000 ½	00	00 ½	0	0 ½	1	1 ½
6	6 - 6 ½	6 ½ - 6¾	6¾ - 6 ¾	6 ¾ - 6 ½	6 ½ - 6 ¾	6 ¾ - 6 ¾	6 ¾ - 6 ¾
49	49 - 50	50 - 51	51 - 52	52 - 53	53 - 54cm	54 - 55	55 - 56
2	2 ½	3	3 ½	4	4 ½	5	
6 ¾ - 7	7 - 7 ¾	7 ¾ - 7 ¾	7 ¾ - 7 ¾	7 ¾ - 7 ½	7 ½ - 7 ¾	7 ¾ - 7 ¾	
56 - 57	57 - 58	58 - 59	59 - 60	60 - 61	61 - 62	62 - 63	

RIDING HELMET												
6 ¾	6 ¾	6 ½	6 ¾	6 ¾	6 ¾	7	7 ¾	7 ¾	7 ¾	7 ½	7 ¾	7 ¾
51	52	53	54	55	56c	57	58	59	60	61	62	63

INSIGHT PEAKED HELMET & PRO-LITE II JOCKEY HELMET												
SHELL SIZE		OVAL					ROUND					
SMALL		51 - 53					51 - 52					
MEDIUM		54 - 57					53 - 56					
LARGE		58 - 61					57 - 60					

SCULPT BACK PROTECTOR			
SIZE	UK DRESS SIZE	BACK LENGTH (1)	
		SHORT	REGULAR
SMALL SLIM	6-8	38	43
SMALL STANDARD	8-10		
MEDIUM SLIM	10-12	44	49
MEDIUM STANDARD	12-14		
LARGE SLIM	14-16	50	55
LARGE STANDARD	16-18		

TI22 BODY PROTECTOR										
SIZE	CHEST (A)	WAIST TO WAIST (C)	WAIST TO WAIST (C)	WAIST (B)	CENTRE BACK LENGTH			CENTRE FRONT LENGTH		
		SHORT & REG	TALL		SHORT	REGULAR	TALL	SHORT	REGULAR	TALL
INFANT SMALL	48 - 53	47 - 54	49 - 56	45 - 52	27.5	29	31	15	16	17.5
INFANT MEDIUM	54 - 61	52 - 59	54 - 61	50 - 58	29	31.5	32.5	17.5	19	20.5
CHILD'S X-SMALL	60 - 64	57 - 64	59 - 66	55 - 61	34.5	35.5	38.5	18.5	19.5	21.5
CHILD'S SMALL	65 - 68	62 - 68	64 - 70	61 - 66	37	38.5	40.5	19.5	21	23
CHILD'S MEDIUM	69 - 75	64 - 72	66 - 74	66 - 72	38	40	42.5	21	22.5	24.5
CHILD'S LARGE	73 - 79	70 - 78	72 - 80	67 - 73	42	44	46.5	23	24.5	27
CHILD'S X-LARGE	77 - 84	74 - 84	76 - 86	68 - 76	46.5	48	51.5	27	30	32.5
YOUTH SLIM SMALL	62 - 69	64 - 74	66 - 76	55 - 60	39	41	43	20.5	22.5	24.5
YOUTH SLIM MEDIUM	66 - 74	70 - 77	72 - 79	60 - 67	40.5	42.5	44.5	22	24	26
YOUTH SLIM LARGE	72 - 80	78 - 88	80 - 90	64 - 72	46	48	50.5	26	28	30
ADULT'S X-SMALL	79 - 87	78 - 88	80 - 90	68 - 76	48	50	53	28	30.5	34
ADULT'S SMALL	82 - 89	79 - 88	81 - 90	76 - 82	49	52.5	55.5	28	30.5	34
ADULT'S MEDIUM	89 - 96	84 - 93	88 - 98	84 - 92	51	53	57	30.5	32	37
ADULT'S LARGE	95 - 104	89 - 99	91 - 101	90 - 98	53	54.5	58.5	32.5	34.5	38.5
ADULT'S X-LARGE	103 - 111	100 - 110	102 - 112	94 - 104	57.5	59	62.5	33.5	35.5	40





For more information visit:  
[CHAMPIONEQUESTRIAN.COM](http://CHAMPIONEQUESTRIAN.COM)

Contact:  
Telephone 0113 270 7000 | [info@finestbrands.co.uk](mailto:info@finestbrands.co.uk)



PROUDLY  
HANDMADE IN  
GREAT BRITAIN